



STEEL FIRE TRAINING TOWERS OVERVIEW



Proudly Made in the U.S.A.

Steel Fire Training Towers

Fire Facilities' Steel Fire Training Towers are the premier tools in fire training. From mobile units to high-rise facilities, our towers allow for a variety of training exercises with live fire exposure. Towers may be customized to meet the specific needs of any fire department.

Steel Tower Benefits

Safety First

- All doors/shutters are operational from both sides.
- Stairs and railings meet IBC/NFPA 1402 standards.
- 100 PSF live loads for decks, floors, attics, and roof systems assure safety with maximum loading requirements
- Flat wall, floor, and roof panels allow for easy and safe training exercises, especially when rappelling and laddering
- Westec® Insulation System provides a safe training environment during live fire exercises
- Scout Temperature Monitoring System provides real-time data, allowing the trainer to ensure safe exercises

Quality, Durable Materials

- Structural steel beams and columns offer superior strength and longevity
- State-of-the-art manufacturing facility features the latest in computer-controlled equipment, providing accurate and consistent products time after time
- Two coats of baked-on paint finish on both sides of 18-gauge hot-dipped galvanized steel panel for optimum durability
- Hot-dipped galvanized fire escapes, stairs, ladders and railings



Fire Facilities Tower Benefits

Customization

- Flexible design enables towers to be customized to meet any requirement
- Options available to accommodate specific training needs
- Custom-made doors and shutters are standard for optimum durability

Convenience

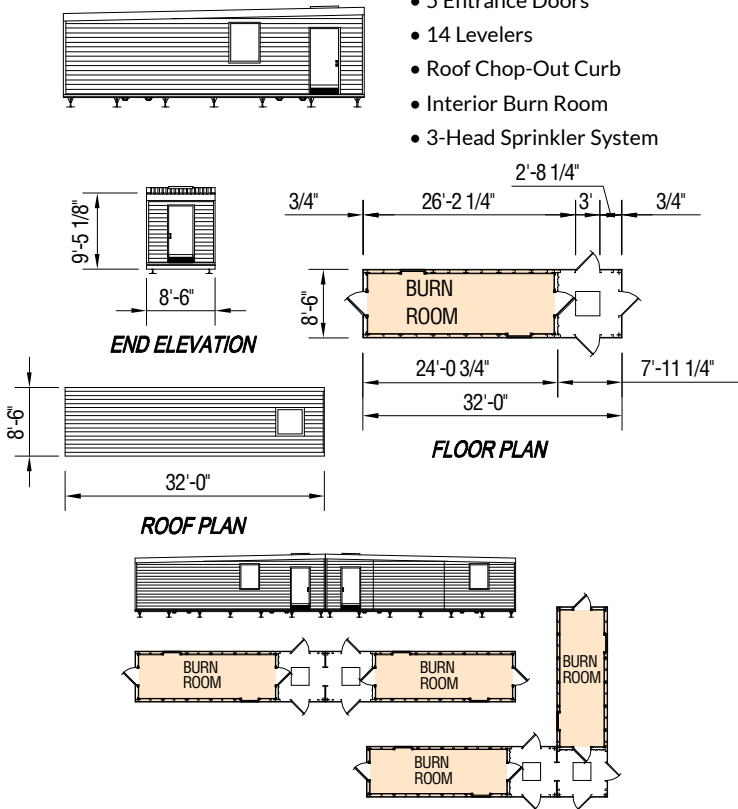
- Single source for design, manufacturing and construction
- Towers designed to meet code and climate constraints, from hurricanes to earthquakes
- The entire tower may be used for training exercises, rather than only using designated areas; ladder or rappel anywhere

Complete Service and Support

- Supported by over 100 years of manufacturing experience
- As the manufacturer and seller of towers, we provide hassle-free customer service
- In-house engineering department offers custom designs and tower solutions
- Knowledgeable and experienced sales force offers guidance with meeting safety and training requirements
- Experienced erectors who are familiar with tower designs, erect towers quickly, and cost-effectively
- Complete turnkey packages available
- Manufactured in the USA
- Fire Facilities holds CSA A660 certification and is experienced in Canadian projects
- Our licensed engineers are available to conduct inspections as required per NFPA 1403 or 1402

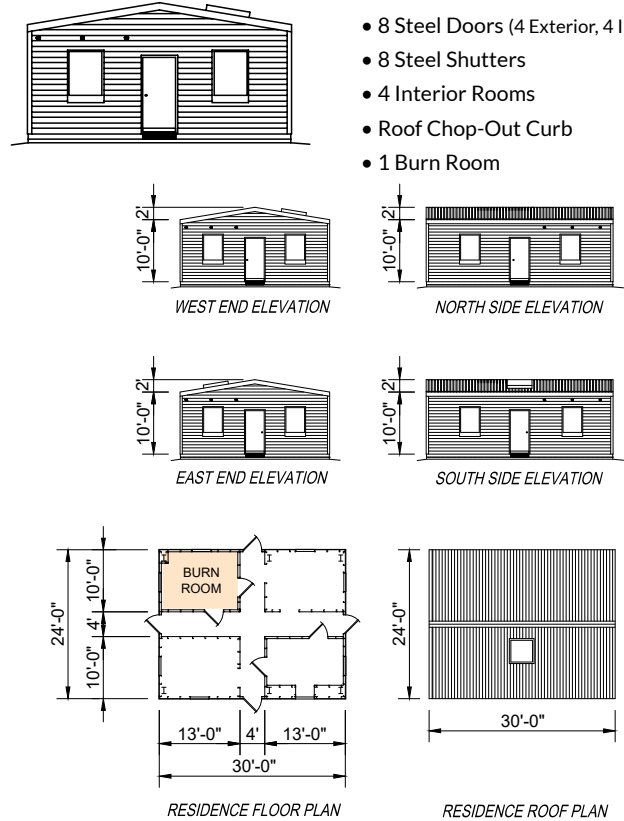
READY-SET-GO

- 32' L x 8' 6" W x 10' 1 1/8" H
- 5 Entrance Doors
- 14 Levelers
- Roof Chop-Out Curb
- Interior Burn Room
- 3-Head Sprinkler System



TRAINEE

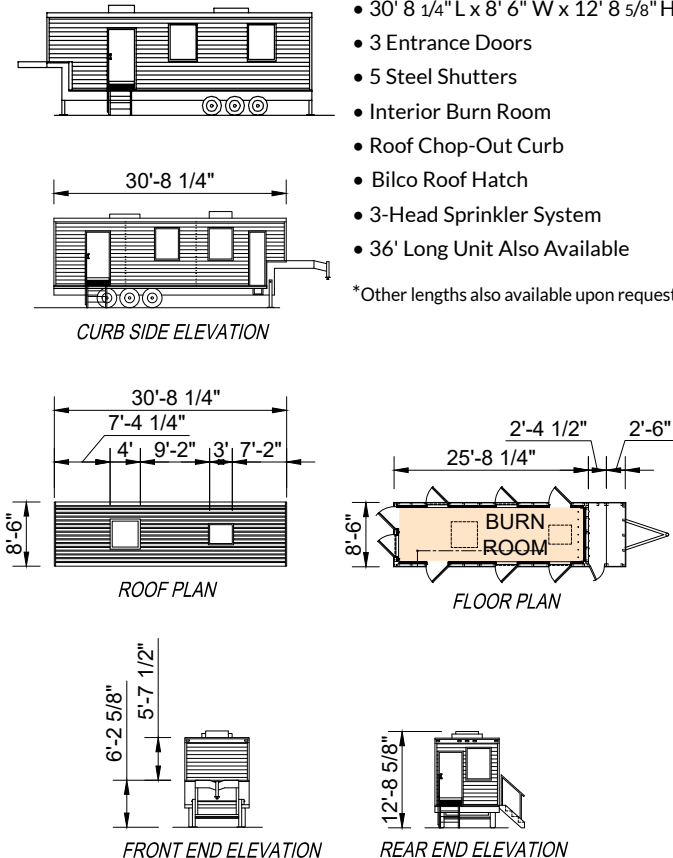
- 24' L x 30' W x 10' H
- 8 Steel Doors (4 Exterior, 4 Interior)
- 8 Steel Shutters
- 4 Interior Rooms
- Roof Chop-Out Curb
- 1 Burn Room



MOBILE TRAINEE

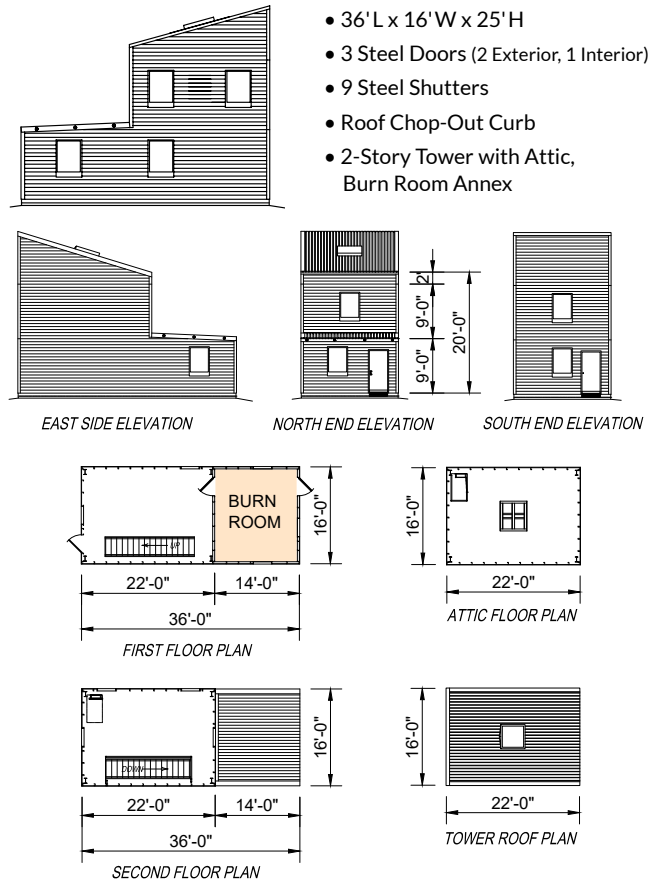
- 30' 8 1/4" L x 8' 6" W x 12' 8 5/8" H*
- 3 Entrance Doors
- 5 Steel Shutters
- Interior Burn Room
- Roof Chop-Out Curb
- Bilco Roof Hatch
- 3-Head Sprinkler System
- 36' Long Unit Also Available

*Other lengths also available upon request.

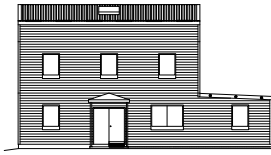


PROBIE

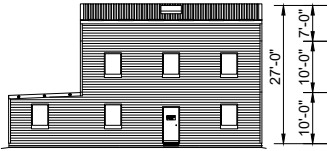
- 36' L x 16' W x 25' H
- 3 Steel Doors (2 Exterior, 1 Interior)
- 9 Steel Shutters
- Roof Chop-Out Curb
- 2-Story Tower with Attic, Burn Room Annex



BATTALION CHIEF



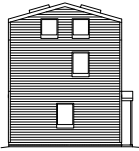
- 49' 4" L x 22' W x 27' H
- 5 Steel Doors (4 Exterior, 1 Interior)
- 21 Steel Shutters
- 2 Roof Chop-Out Curbs
- 2-Story Residential Section with Attic, Burn Room Annex



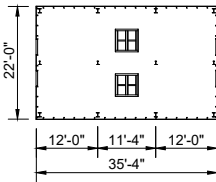
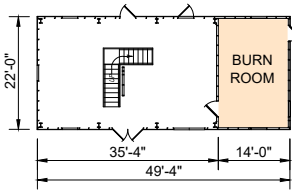
WEST SIDE ELEVATION



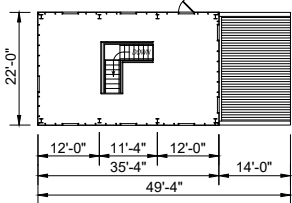
NORTH END ELEVATION



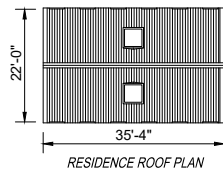
SOUTH END ELEVATION



ATTIC FLOOR PLAN

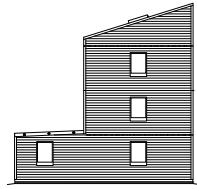


SECOND FLOOR PLAN

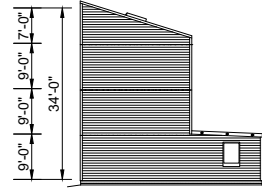


RESIDENCE ROOF PLAN

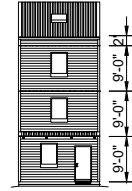
FIREFIGHTER



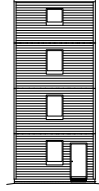
- 36' L x 16' W x 34' H
- 3 Steel Doors (2 Exterior, 1 Interior)
- 12 Steel Shutters
- Roof Chop-Out Curb
- 3-Story Tower with Attic, Burn Room Annex



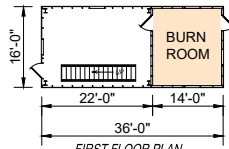
EAST SIDE ELEVATION



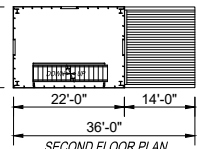
NORTH END ELEVATION



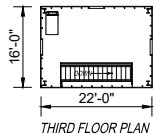
SOUTH END ELEVATION



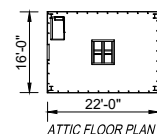
FIRST FLOOR PLAN



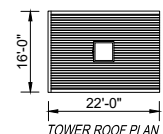
SECOND FLOOR PLAN



THIRD FLOOR PLAN

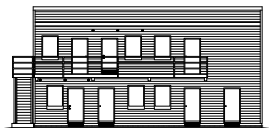


ATTIC FLOOR PLAN

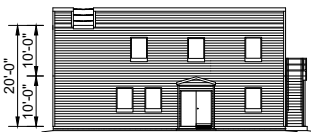


TOWER ROOF PLAN

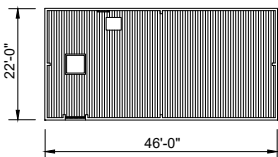
HALL CRAWLER



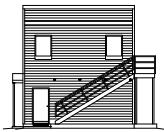
- 46' L x 22' W x 20' H
- 22 Steel Doors (9 Exterior, 13 Interior)
- 14 Steel Shutters
- Parapet Roof Guard
- 9 Interior Rooms
- 2 Burn Rooms
- Corner Burn Area
- Cantilevered Balcony with Stairs
- 1 Roof Chop-Out Curb
- 1 Roof Hatch



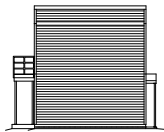
EAST SIDE ELEVATION



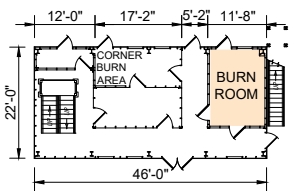
ROOF PLAN



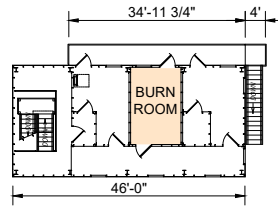
NORTH END ELEVATION



SOUTH END ELEVATION

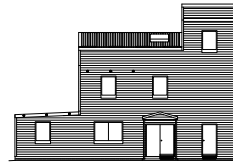


FIRST FLOOR PLAN

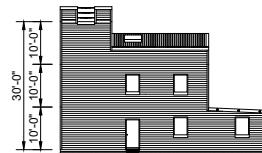


SECOND FLOOR PLAN

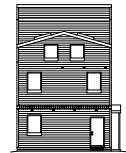
DEPUTY CHIEF



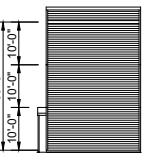
- 48' 8" L x 22' W x 30' H
- 7 Steel Doors (4 Exterior, 3 Interior)
- 15 Steel Shutters
- 2 Roof Chop-Out Curbs
- 1 Roof Hatch
- Parapet Roof Guard
- 2nd Floor Burn Room
- 3-Story Tower, 2-Story Residential Section with Attic, Burn Room Annex



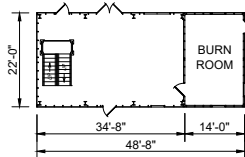
EAST SIDE ELEVATION



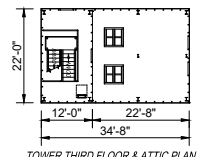
NORTH END ELEVATION



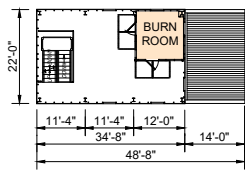
SOUTH END ELEVATION



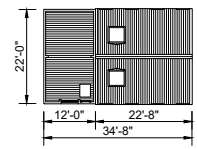
FIRST FLOOR PLAN



TOWER THIRD FLOOR & ATTIC PLAN

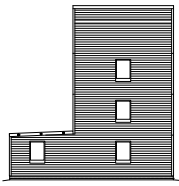


SECOND FLOOR PLAN

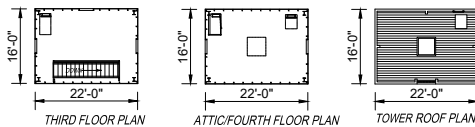
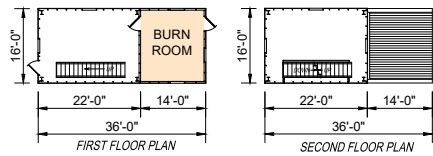
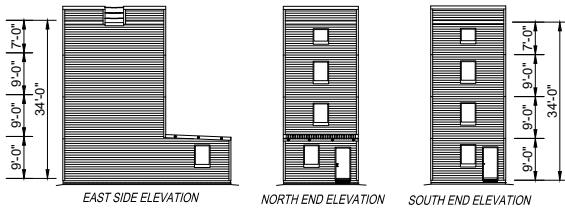


TOWER ROOF AND RESIDENCE ROOF PLAN

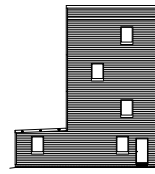
LIEUTENANT



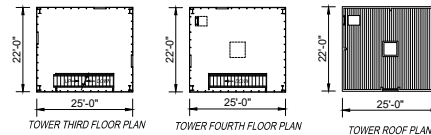
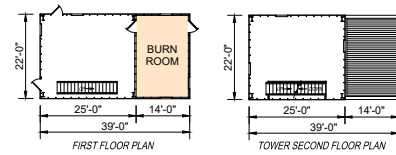
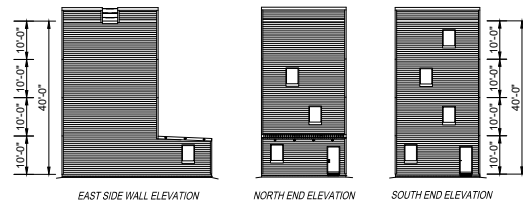
- 36' L x 16' W x 34' H
- 3 Steel Doors (2 Exterior, 1 Interior)
- 13 Steel Shutters
- 1 Roof Chop-Out Curb
- 1 Roof Hatch
- Parapet Roof Guard
- 3-Story Tower with Attic, Burn Room Annex



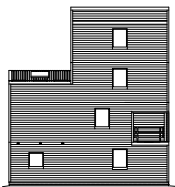
CAPTAIN



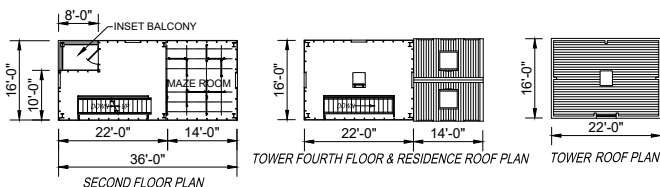
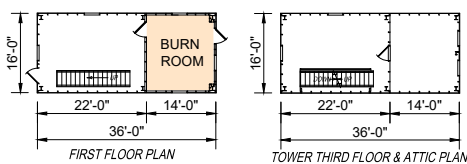
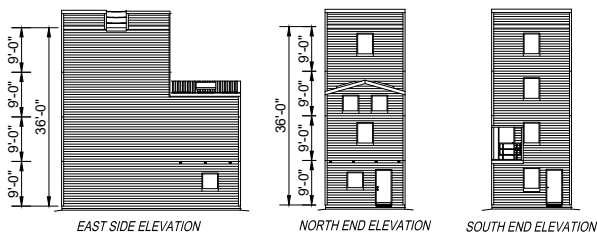
- 39' L x 22' W x 40' H
- 3 Steel Doors (2 Exterior, 1 Interior)
- 13 Steel Shutters
- 1 Roof Chop-Out Curb
- 1 Roof Hatch
- Parapet Roof Guard
- 4-Story Tower, Burn Room Annex



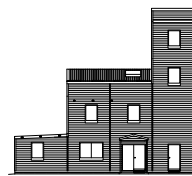
DIVISION CHIEF



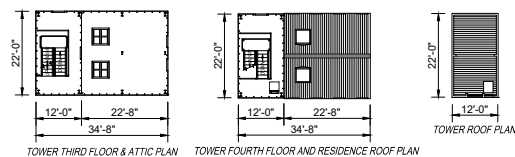
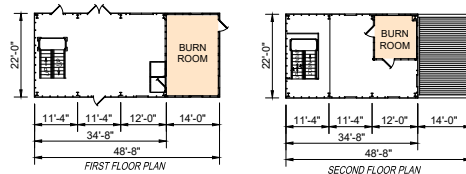
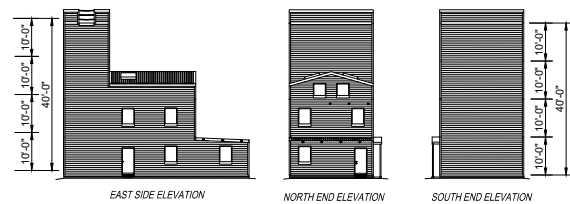
- 36' L x 16' W x 36' H
- 4 Steel Doors (3 Exterior, 1 Interior)
- 16 Steel Shutters
- 2 Roof Chop-Out Curbs
- Parapet Roof Guard
- 1 Roof Hatch
- Inset Corner Balcony
- Maze Room
- Burn Room
- 4-Story Tower, 3-Story Residential Section



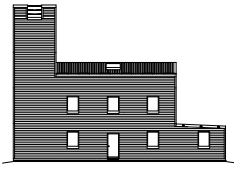
ASSISTANT FIRE CHIEF



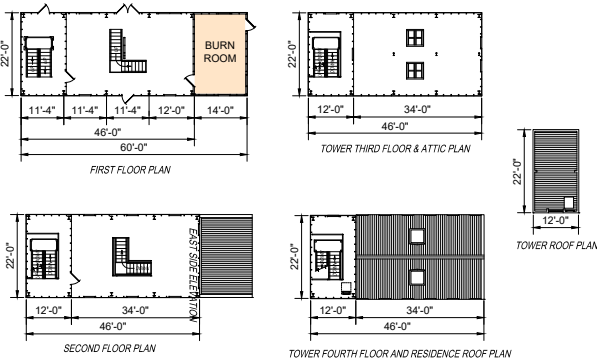
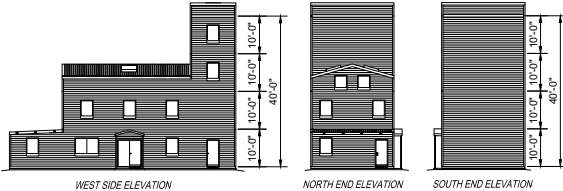
- 48' 8" L x 22' W x 40' H
- 7 Steel Doors (4 Exterior, 3 Interior)
- 16 Steel Shutters
- 2 Roof Chop-Out Curbs
- 1 Roof Hatch
- Parapet Roof Guard
- 2nd Floor Burn Room
- 4-Story Tower, 2-Story Residential Section with Attic, Burn Room Annex



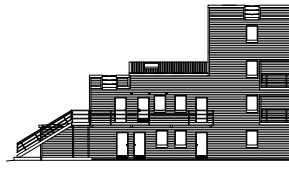
FIRE CHIEF



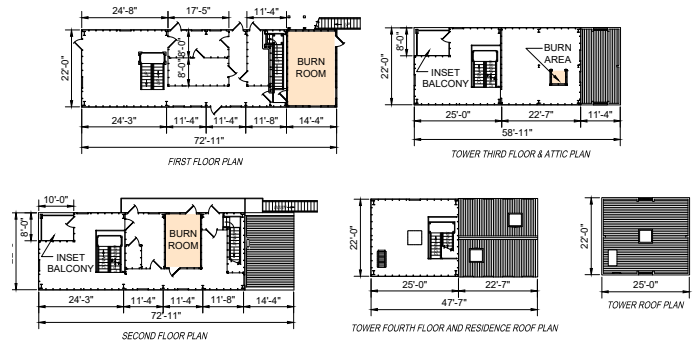
- 60' L x 22' W x 40' H
- 6 Steel Doors (5 Exterior, 1 Interior)
- 20 Steel Shutters
- 2 Roof Chop-Out Curbs
- 1 Roof Hatch
- Parapet Roof Guard
- 4-Story Tower, 2-Story Residential Section with Attic, Burn Room Annex



COMMISSIONER



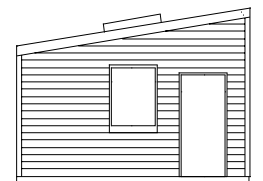
- 72'11" L x 22' W x 40' H
- 23 Steel Doors (11 Exterior, 12 Interior)
- 21 Steel Shutters
- 3 Roof Chop-Out Curbs
- 1 Roof Hatch
- 2nd Floor Burn Room, Attic Burn Area
- Hallways, Cantilevered Balcony, Inset Balcony, Fire Escape
- 4-Story Tower, 2-Story Residential Section, 1-Story Burn Room Annex



Volunteer Fire Training Towers

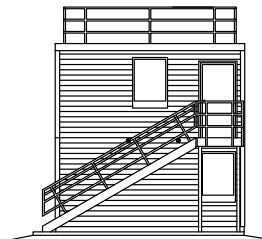
Fire Facilities' Volunteer Fire Training Towers are the first fire training towers designed specifically for the volunteer and smaller full-time department budget. The Volunteer models offer the quality and craftsmanship of our larger models, but in an affordable design that can be assembled similar to home construction techniques.

VOLUNTEER 1



- 16' L x 24' W x 9' H
- 3 Steel Doors (2 Exterior, 1 Interior)
- 3 Steel Shutters
- 1 Roof Chop-Out Curb
- Interior Room
- Burn Room

VOLUNTEER 2



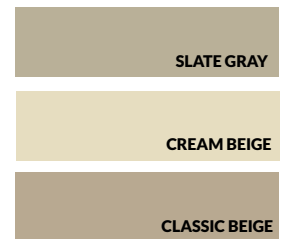
- 18' L x 16' W x 18' H
- 5 Steel Doors (4 Exterior, 1 Interior)
- 4 Steel Shutters
- 1 Roof Chop-Out Curb
- 1 Roof Hatch
- Rappelling Anchor
- Burn Room
- Fire Escape

COLOR OPTIONS

Trim Colors



Wall Colors



* Iced White also available in wall colors.

Note: Colors vary from actual panel material. For a steel color sample, please contact Fire Facilities.

Scout Temperature Monitoring System

- Bluetooth connectivity to a user-supplied Apple or Android device for up to 270 feet away
- Simultaneous display of nine probe locations
- Touch-sensitive controls with on-screen programming
- Data-logging up to 72 hours of burn room temperatures
- Infrared Data Transfer Device with SD Card for ease of data transfer to off-site computer
- Graphing capabilities via the user's own Microsoft Excel
- Internal audio alarm
- One-year warranty



Fire Watchman Pyrometer

- Simultaneously monitors 16 thermocouples on-site and via the Cloud
- Capacitive sensitive back-lit touch screen monitor with on screen programming
- 24/7 monitoring/thermally automated data logging
- Automatically downloads to a USB drive/uploads to Cloud for easy data transfer, monitoring and reporting
- On site mobile monitoring via WiFi



- External audible/visible alarm built in
- One-year warranty
- Optional external audible/visual alarm system

Tower Accessories

A wide variety of training features are available to help replicate the situations that firefighters encounter while on the job. A full line of burn props simulate real life situations while managing fuel load and aiding in cleanup.

Additional accessories are available for training forcible entry, search and rescue, confined space rescue, and rappelling. With a list of over 50 additional training tools, plus our custom fabrication capabilities, your training facility can be tailored to your community's needs to best prepare your staff for action. Please see our web site, firefacilities.com, for a complete list of tower accessories.



Westec® Insulation System

- Included in all fire training tower burn rooms
- Withstands a maximum temperature of 1850°F*
- Innovative two-part system; stainless steel covering protects embedded insulation
- Provides highest level of thermal protection
- Resists impacts, breaking, spalling, and cracking
- May be used to retrofit concrete structures
- Supported by a 15-year warranty

* For firefighter safety, Fire Facilities does not recommend training at temperatures in excess of 1200°F.



The Westec® Insulation System is protected by US Patent 7,823,357 B2.



Training Structure Financing Program

- Spreads the cost of a training structure over a number of years instead of a single-year budget outlay
- Leasing periods from 3 to 15 years
- Flexible payment structure including monthly, quarterly, semiannual, and annual options
- Competitive tax exempt rates for qualified applicants

Warranties

- 30/25-year limited warranty on paint finish, which includes chalking, fading, and breakdown of film integrity

Tower Parts and Workmanship Warranty

- Fire Facilities warrants all materials to be free of defect for a period of one year

Westec® Insulation System Warranty

- 15-year limited warranty provides coverage against a break in the thermal barrier caused by cracking, breaking, and spalling

Structure Warranty

- 5-year limited warranty protects the structure itself



For more information, contact us at:

800-929-3726
866-639-7012 Fax

314 Wilburn Road
Sun Prairie, WI 53590 USA

www.firefacilities.com
info@firefacilities.com

